

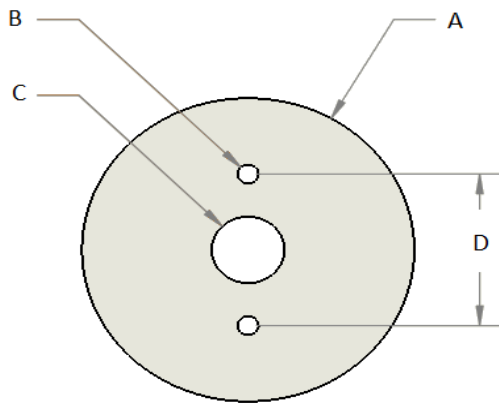
EASY ORDER FORM FOR STANDARD 2 HOLE VOLCANIC LAVA GRINDING STONE SETS

Tortillaworlds EASY ORDER FORM makes ordering a new/and or replacement corn mill long wearing volcanic lava grinding stones convenient & easy saving you up to *50% off the price of a brand name manufacturer simply by measuring the stones yourself or shipping one set to us receiving the same quality, durability and warranty as you expect from a name brand manufacturer. Thank you for your loyalty and trust in our brands. We appreciate your business and support. We're excited to continue working together and providing you with quality products, ingredients, lubricants, parts, services and equipment you expect

***Print clearly so words and numbers are legible**

1. Answer all questions on pages 1 thru 3 and A thru F for both sides of stones
2. Complete Company name, address & general customer information form on page 2
3. Print, sign, date and return to Tortillaworld, Inc. at ezorder@tortillaworld.com
4. 50% down payment required
5. Balance plus cost of skidding, crating & shipping fees due before shipping

WE SELL NEW VOLCANIC LAVA STONE SETS FROM 8" UP TO 32" IN O.D.

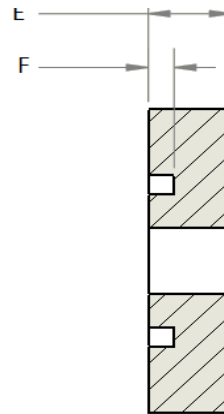


STATIONARY SIDE

A= _____ D= _____

B= _____ E= _____

C= _____ F= _____



ROTARY SIDE

A= _____ D= _____

B= _____ E= _____

C= _____ F= _____



Please reference page # 3 for brief explanation of what measurements are needed for corresponding letters above. **NOTE:** Measurements above are for new standard 2 hole volcanic lava stone sets



Tortillaworld.com



Company name: _____

Address: _____ City: _____

Zip code: _____ Country: _____

Contact email: _____ Contact # _____

Ext # _____ Print name: _____

Sign here _____ Date: _____

Call us for debit and credit card payments, mobile payments, bank wire transfers or checks

Tortillaworld, Inc.
Plainfield IL, 60544/PO Box 346
Toll free: 1-800-335-Tortilla (8678) ext: 1
Direct/WhatsApp: 773-882-2308
Email: ezorder@tortillaworld.com
www.tortillaworld.com



**MOBILE
PAYMENT**



**NSF Registered
new volcanic lava stone sets
now available from
8" to 32" in diameter/O.D.**

A= outer diameter/O.D. measurements of lava stone

What size in diameter are your stones

Get by measuring your stones like in the picture on the right

NOTE: Stationary & Rotary sides are usually the same diameter

Example: 8", 10", 12", 14", 16" O.D. volcanic lava stones



B= mounting peg hole dimensions _____

NOTE: mounting pegs are usually 3/4 or 1" inch in diameter/19.05/25 mm

Get by measuring your stones like in the picture on the right

NOTE: Stationary & Rotary sides are usually the same diameter



C= what is the bore size diameter of your stone _____

The bore is the hole in the middle of you stone where your corn auger goes thru

Get by measuring your stones like in the picture on the right

NOTE: Stationary & Rotary sides are usually the same diameter



D= what is the distance in inches from the center of 1 peg to the center of the other _____

Measure center of mounting peg hole to center of the other mounting peg hole

Get by measuring your stones like in the picture on the right

NOTE: Stationary & Rotary sides are usually different dimensions

Example: Stationary side is 7 inches apart/Rotary side is 6 inches apart



E= measure total thickness of your lava stone _____

How thick are your stones now

Get by measuring your stones like in the picture on the right

NOTE: Stationary & Rotary sides are usually the same diameter



F= how deep is mounting peg hole _____

Measure how deep your pegs are

NOTE: mounting pegs are usually 3/4 or 1" inch in depth/19.05/25 mm

Get by measuring your stones like in the picture on the right

NOTE: Stationary & Rotary sides are usually the same depth



Corn mill brand _____ HP size motor _____

What size outer diameter/O.D. lava stones _____ Quantity of new lava stone sets _____

What carve would you like on your new volcanic lava stone sets: Mark with an X

_____ soft table tortilla

_____ chip tortilla

_____ both

_____ Optional FDA Registered volcanic lava stones

